

TYPE SL

MANUFACTURING CHARACTERISTICS:

- **Saddle:** in carbon steel
- **Treatment:** galvanizing process (white colour)

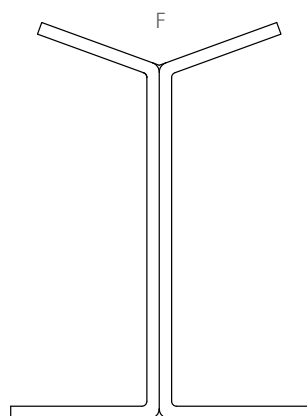


APPLICATIONS

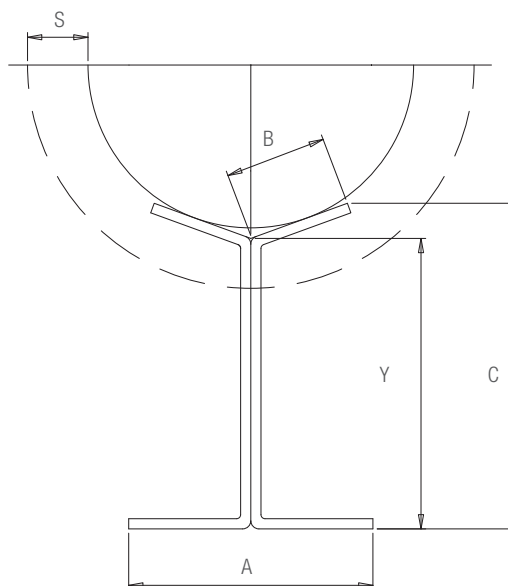
The saddle is a support element for insulated piping, but it can also be used for non-insulated piping to further reduce the friction of the piping in the sliding zone. Specifically designed to be combined with a Type OS or Type OSS roller support, it guarantees correct installation of the piping, since it prevents contact between the roller of the support and the piping.

INSTALLATION:

The V-side resting against the piping and the flat side sliding on the support roller.



Size	F [kg]
10	600



Roller type	Pipe diameter		Load [Kg]	A [mm]	B [mm]	C [mm]	L length [mm]	S insulation [mm]
	MIN [mm]	MAX [mm]						
SL 10	0	80	600	60	25	80	200	40