

# TYPE OD 100

## MANUFACTURING CHARACTERISTICS:

- **Cage:** in Fe 360
- **Roller:** in carbon steel, Nylon, Teflon (for insulating type)
- **Pin:** in stainless steel AISI 303
- **Bushings:** in sintered bronze and self-lubricating
- **Treatment:** galvanizing process (white colour)

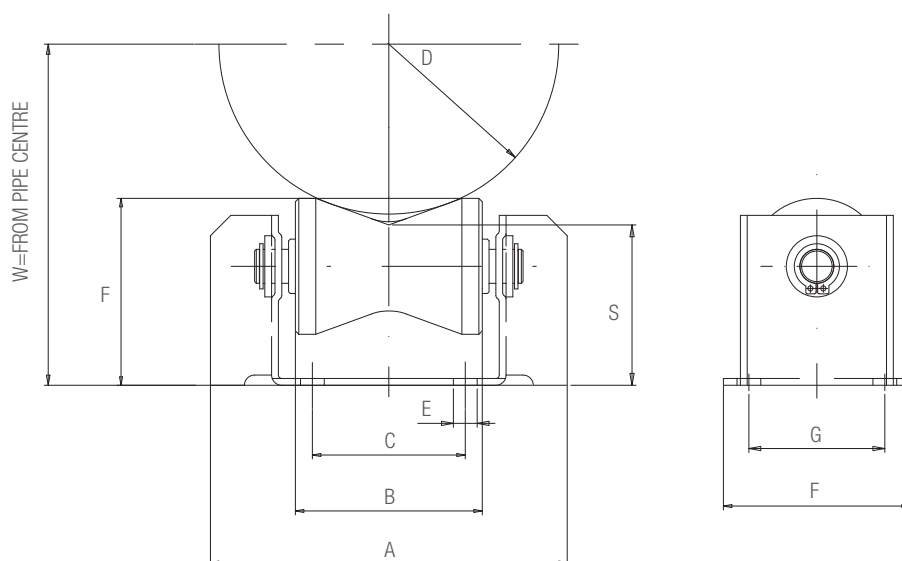
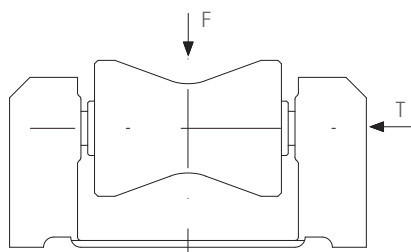


## APPLICATIONS

This type of support is used to guide and support the piping, and the concave form of the roller also provides lateral containment. It allows longitudinal sliding of the piping which it supports. It is particularly suited to support a lateral load which is up to 35% of the vertical load applied by the piping.

## INSTALLATION:

This support is connected to the plant by means of bolts.



Size	F [kg]	r/F
100	1000	0.075

$$W = D \times 0.532 + S$$

r = radial friction force

r/F = radial friction coefficient

Roller type	Pipe diameter		Load [Kg]	A [mm]	B [mm]	C [mm]	E [mm]	F [mm]	G [mm]	H [mm]	S [mm]
	MIN [mm]	MAX [mm]									
OD 100	100	180	1000	142	70	60	8	71	54	61	47